

EASTERN NORTH STORIES

VETERANS MEMORIAL PLAYGROUND



The Veterans Memorial Playground and Hartranft Playground Alliance go hand in hand when it comes to their community influence. The Veterans Memorial Playground has been the site of community organizing for decades, beginning with its opening in 1956. Spurred by the success of the playground, Hartranft community members rallied support for the construction of a recreation center. Funding was awarded through the Model Cities Federal grant program and the Hartranft Community Corporation began construction in 1973.

The Hartranft Recreation Center's basketball league was a thriving space for youth until lack of funding resulted in its closing during the early 2000s. In 2018, through a collaboration of The Village of Arts and Humanities, Parks and Recreation, Philadelphia Sixers, the Hartranft Playground Alliance, and residents the basketball courts were renovated, and an exhibit of the center's history was created.



EASTERN NORTH STORIES

BLAZIN' FLAVORZ/VIOLA THEATER



Prior to Blazin Flavorz, this site was home to the Fairhill Palace Theatre, which opened in 1914 as a single screen, 490-seat auditorium. In 1929, the Fairhill was renamed Viola Theater. After years of decline, the theater began to show B-list movies, and eventually closed its doors in 1947. The theater was eventually renovated into a plumbing warehouse, then a thrift store. By the 1980's the building was renovated into a church.

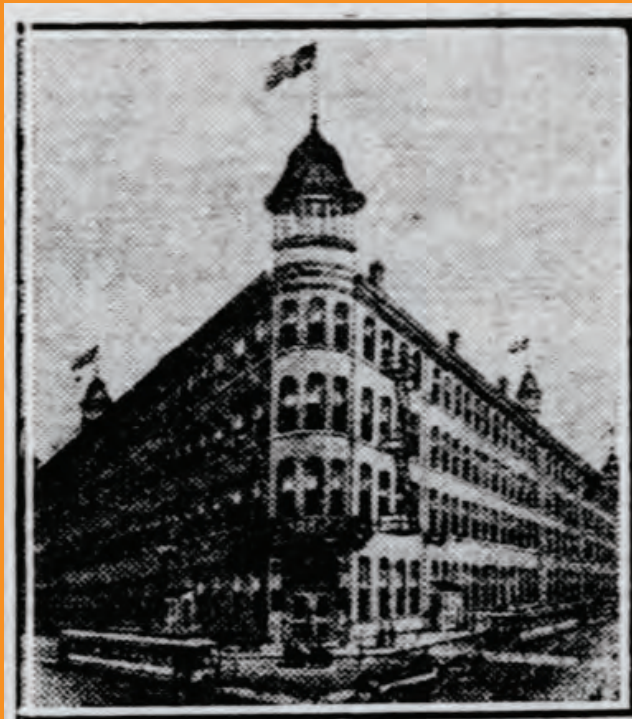
In 2021, entrepreneur and Hartranft resident David Gavin purchased the property, and opened his fusion restaurant "Blazin Flavorz". In addition to owning this property, he is hoping to turn the 2400 block of Germantown Ave into "Blazin Way".

What type of businesses would you like to see open on "Blazin Way"?



EASTERN NORTH STORIES

WASHINGTON HOTEL



Derr's Hotel Seventh and Dauphin Sts.

The popular proprietor of Derr's Washington Hotel wishes to call the attention of the visiting public to the city during Founders' Week to his splendid system of management. The hostelry is situated at Seventh and Dauphin streets and contains 150 well-lighted and ventilated rooms. There are passenger elevators, electric lights, steam heat and every modern appliance for comfort.

The dining room service is famed for its quality, and the table is well known among connoisseurs for its delicacy.

It is convenient to all parts of the city, as trolley lines and train service are within a few blocks. An advantage of the house consists in its adjacent large stables, where carriages can be hired at all hours.

P. Oliver Derr, the proprietor, extends to visitors of the city a cordial welcome and the courtesies of the Washington Hotel.

While exact dates for the hotel's opening are unknown, by 1885, an unnamed Derr family member had inherited the property from the late P. Oliver Derr, the former owner of the hotel, who first began working there in his youth. The hotel, a large four story, 150 room, brick hotel, was built around the time when colonial cities like Philadelphia were leading the country in hotel development. The Washington Hotel was designed by architect Fredrick J. Ritter and featured passenger elevators, electric lighting, steam heat and "every modern appliance for comfort." Finally, Mr. Derr touted that his hotel's dining room was known for its

quality meals and was accessible by trolley and train lines a mere few blocks away.

For roughly 80 years, the hotel stood at the intersection of Germantown Avenue at 7th and Dauphin Streets until it was demolished as part of a North Philadelphia urban renewal project in the 1970s.

The lot has since been vacant. What could be built here?



EASTERN NORTH STORIES

PHILADELPHIA TRANSPORTATION COMPANY



Formerly owned by the People's Railway Corporation, this enormous lot was used between 1875 to 1881 to store and transport train cars for large corporations. This included the Baldwin Locomotive Company in the nearby neighborhood of Franklinton, currently known as the Logan Square neighborhood. After 1894, People's Company and the Philadelphia Traction Company, a cable car company, agreed to consolidate. From then on, the site was a transit repair shop until it was bought out again in the 1970s by the

Philadelphia Transportation Corporation, which ran a network of trolley and bus lines throughout Philadelphia. Despite this location having multiple owners over time, it was a community asset as an employer of local residents.

Unfortunately, after SEPTA's purchase of the lot, the building has remained vacant.

How could this space be turned into a new asset for the neighborhood?



EASTERN NORTH STORIES

8TH AND DIAMOND PLAYGROUND



The 8th and Diamond Playground has gone through many changes over the years. Research shows that the plot of land was owned by Anna H. Carver in 1875. By 1910, it was a lumber yard, highlighting the industrial land use of Eastern North throughout the 1900s. By 1942, the land was designated as a park space. The playground, picnic area, basketball courts, and a small multipurpose building were later additions.

Today, the 8th and Diamond Playground is a crucial community hub, hosting events and programming like the MLK

“Creative Expressions” event, girl scout meetings, an after-school program, and advisory council meetings.

In 2020, the City’s Rebuild program selected this site for \$2.2 million investment in upgrades to and expansion of the recreation center, new playground equipment, and trees.

Are there other sites in the neighborhood that you wish the City would invest in too?



EASTERN NORTH STORIES

THE U SCHOOL



The U-School is a modern, innovative educational institution focuses on four learning principles and three unique values to help prepare students to become empathetic, problem-solving leaders. The four principles ground the learning process that is competency based for “the knowledge and skills learners must successfully apply in order to solve real world problems.” Its three values “Do, Love, Dream” focus on enabling students through trust and character growth.

This location has been a pillar of youth

education in the neighborhood since the early 1800s. Former schools included the Rutledge School (1800s-1880s) and Ferguson School (1880s-2000s). These schools have been able to provide quality, public education which is essential in a low-income neighborhood.

The building’s unique Colonial Revival architecture and educational styles contribute to the neighborhood’s culture.



EASTERN NORTH STORIES

JAZZ MURAL



This intricate mural dedicated to music and art was created by Philadelphia artist Danny Torres. The mural features a collection of artists emerging from two angels' hands. A dream-like state surrounds them with music notes and clouds. There are musicians and dancers intertwined throughout the mural. Encouraging words such as creativity, focus, and dedication surround the artists. On the far-right side of the mural, a painter is featured creating artwork

inspired by the surrounding music.

The mural was painted in 2005 as a part of APM's continued efforts to revive Eastern North. The mural is on the side wall of an auto repair shop and directly across the street APM's field office for community and economic development.



EASTERN NORTH STORIES

JARDINES DE BORINQUEN



Jardines de Borinquen at 6th and Diamond Streets is APM's first attempt to stabilize the community by constructing affordable housing. The project includes 90 units of affordable rental housing for families. The exterior has a distinct Latin architectural design and the inner courtyard provides places for play and parking.

Did you know that although APM has built 100s of affordable rental and owner-occupied housing units since the mid-1990s, housing affordability still is a concern in this neighborhood?



EASTERN NORTH STORIES

COUSIN'S SUPERMARKET



Borinquen Plaza, the site of Cousin's Supermarket, TruMark Financial Credit Union, and La Placita Park, was formerly a swath of vacant land and abandoned buildings bisected by Germantown Avenue. Prior uses of this site dating to the early 1900s include the Anshei Sholom Synagogue, private halls, and residences. With the support of the Philadelphia Redevelopment Authority, Asociacion

Puertorriquenos en Marcha aggregated over 100 parcels into one 3.5-acre site.

In 1999, the first supermarket in more than 30 years opened in the space currently occupied by Cousin's Supermarket, which offers a range of Latino as well as other specialty foods.





Prepared by Community Development Workshop 2022, Tyler School of Art + Architecture,
Temple University in partnership with Asociacion Puertorriquenos en Marcha.

